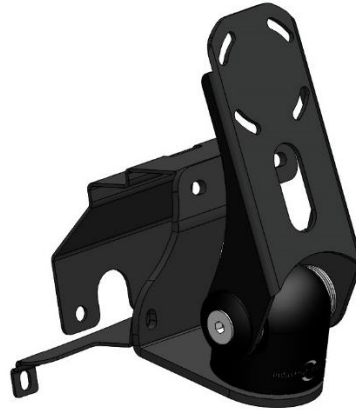


Installation Instructions

Fiat 500 (2018+) In Dash Mount



Step

Instructions

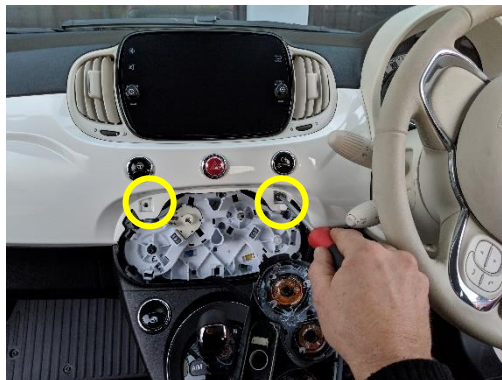
1

Lever and remove plastic A/C controls.

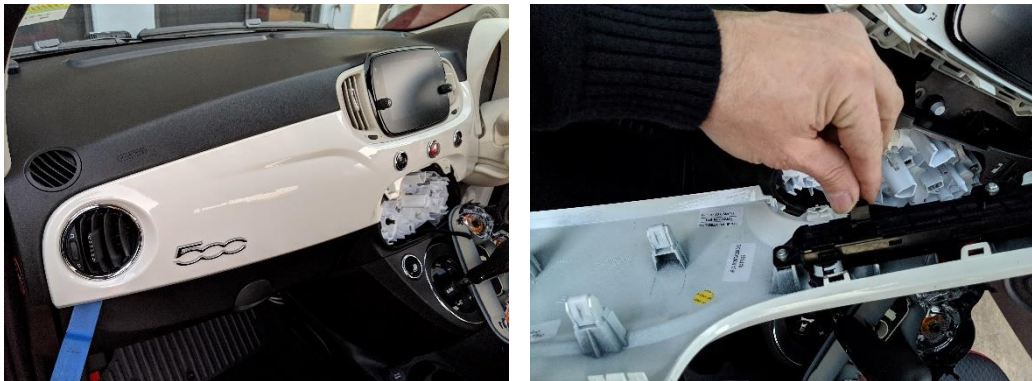


2

Remove 2x screws.



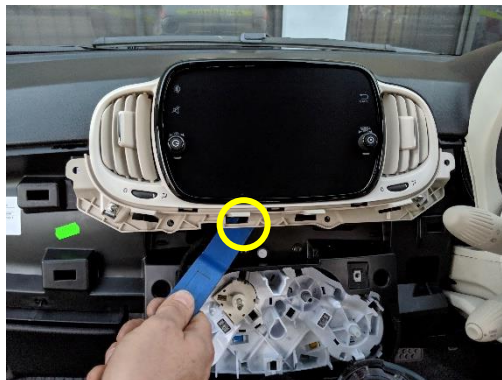
- 3 Lever and remove lower plastic dashboard surrounds, unplugging centre controls.



- 4 Remove 2x screws.

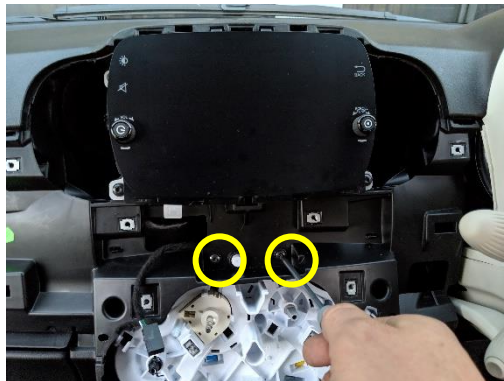


- 5 Lever and remove air vent plastic surround.



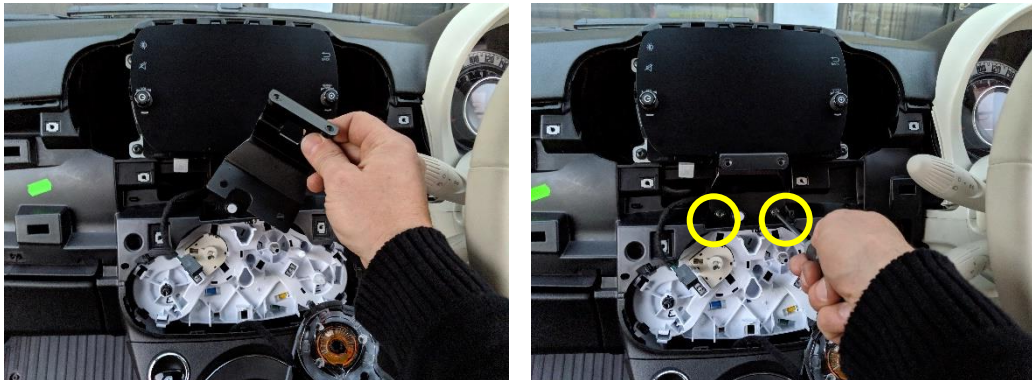
6

Remove 2x screws.



7

Install upper bracket using 2x screws removed in step 6.



8

Replace air vent plastic surround.



9

Replace 2x screws.



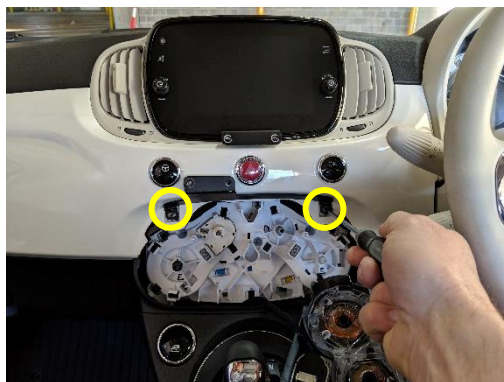
10

Plug in and replace plastic dashboard surround.



11

Install lower bracket using 2x screws removed in Step 2.



12

Replace plastic A/C controls.



13

Install front bracket using 4x countersunk screws provided.



If you have any issues or questions, please contact us.
Industrial Evolution