



Indash Installation Instructions

Ford Territory 2012+



Step	Product Image	Instructions
1		 <p>Pop out, 3 x plastic cover as shown.</p>
2		
3		 <p>Unplug all electrical plugs. Remove screws</p>

4



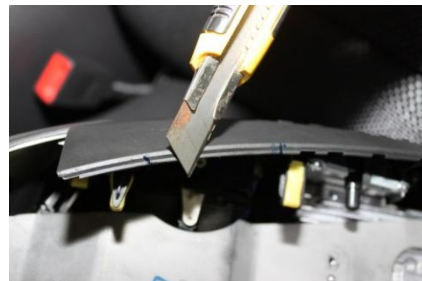
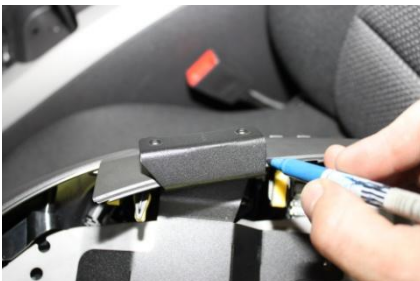
Remove console assembly

5



Assembly side brackets as shown, self tap

6



For better fit trim "internal plastic" without damaging the "exposed plastic"

7



Trim white plastic tip. Screw back the side plates so the front console is complete and ready to snap back into vehicle.

8



9



Loose screw off slightly push "U" packer under the plastic. reason is to align the plastic moulding to the centre console. Trim plastic standoff

10



Fit Console, plug all electrical, re -screw, snap back the plastic components.

Install computer VESA plate or docking station.

We supply a large range of custom designed docking stations and VESA plates to suit any tablet, computer, device.

If you have any issues please contact us.

Brett Franzl
Industrial Evolution