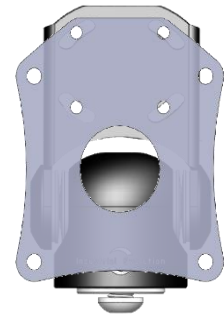


Installation Instructions

Isuzu F & N Series (2023+)



Vesa B



STEP

INSTRUCTION

- 1 Remove 3 x fixings from underneath display unit as shown, using shown attachment for 2 x outside



- 2 Loosen, unplug, and set aside display unit. Loosen front dash surround as shown.



- 3 Install side brackets as shown. Using a sharp blade, carefully mark the contact points between the side brackets and the internal plastic rib from the dash surround. Then carefully trim each side as shown, taking care not to damage the external face.



- 4 Return all dash components to their original state.



5

Install front bracket using 4x countersunk screws provided.



Enjoy your new InDash Mount!

If you have any issues or questions, please contact us.