

## Installation Instructions Mercedes-Benz Vito (2015+)



Step

Instructions

1

Carefully tilt centre cover forward and unplug wires.

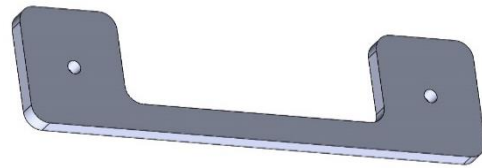


2

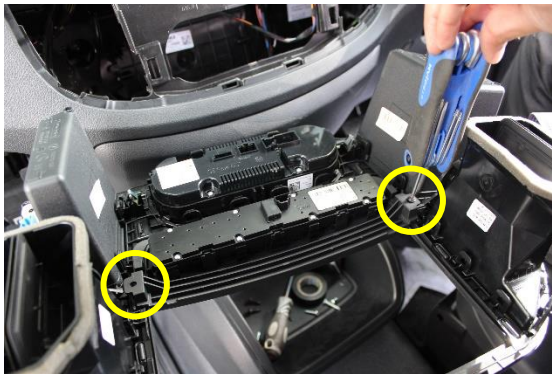
Install L + R side brackets around control unit.



- 3 Screw in metal piece on top of plastic, using 2 counter sunk screws provided.



- 4 From centre cover, remove the two screws from the button panel.



- 5 Plug the button panel back in to control unit and affix using the two screws.



6

Reinstall centre cover.



7

Install dash bracket with 4x countersunk M5 screws provided.



8

Enjoy your new In Dash Mount!



If you have any issues or questions, please contact us.  
**Industrial Evolution.**