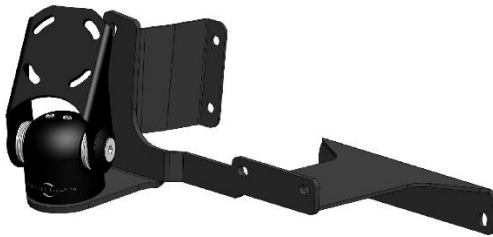


Installation Instructions Mitsubishi Canter (1995-2005)



Step

Instructions

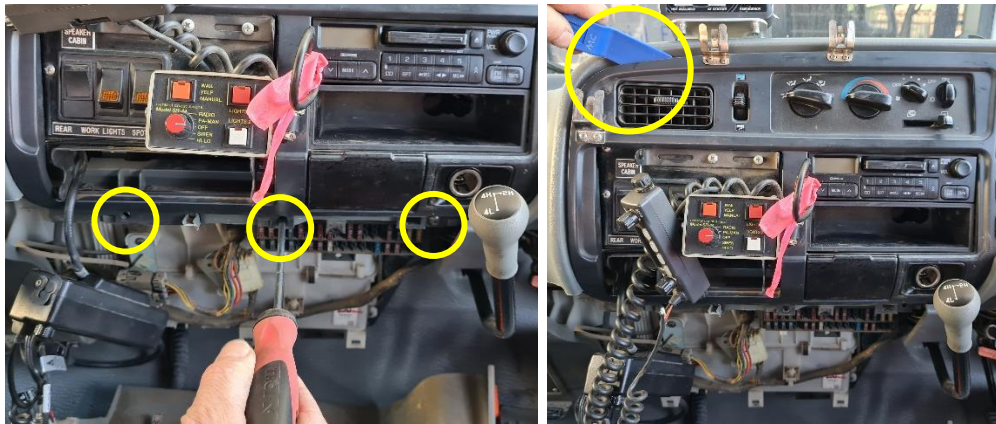
- 1 Lever dash compartments as shown, then remove 1 x screw.



- 2 Remove 3 x screws and lift away dash panel.



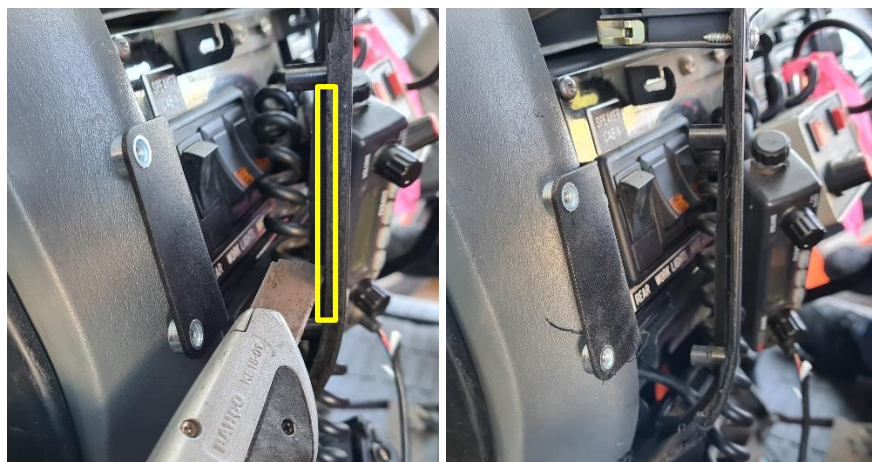
- 3 Remove 3 x screws, then loosen upper dash plastic as indicated.



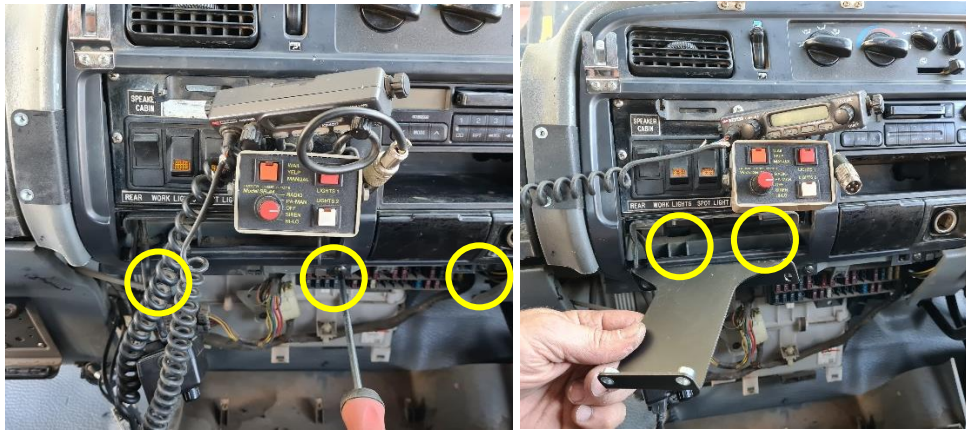
- 4 Install first bracket using 2 x existing internal screw locations.



- 5 Using a sharp blade, carefully shave off the indicated internal plastic ribbing.



- 6 Return 3 x screws into the dash. Install second bracket using 2 x internal mounting locations.



- 7 Return remaining dash components to their original state.



- 8 Install front bracket using 4 x countersunk screws provided.

Enjoy your new InDash Mount!



If you have any issues or questions, please contact us.

Industrial Evolution