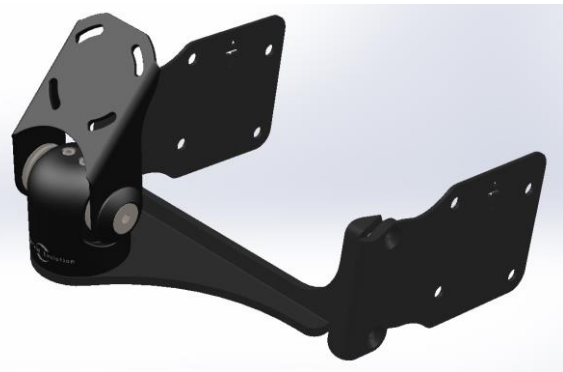


Installation Instructions
Nissan patrol (2012+)



Step

Instructions

1

Remove two screws



2

Unclip and remove plastic trim pieces



- 3 Carefully move the fascia panel below the radio unit and unscrew 4 screws around the unit



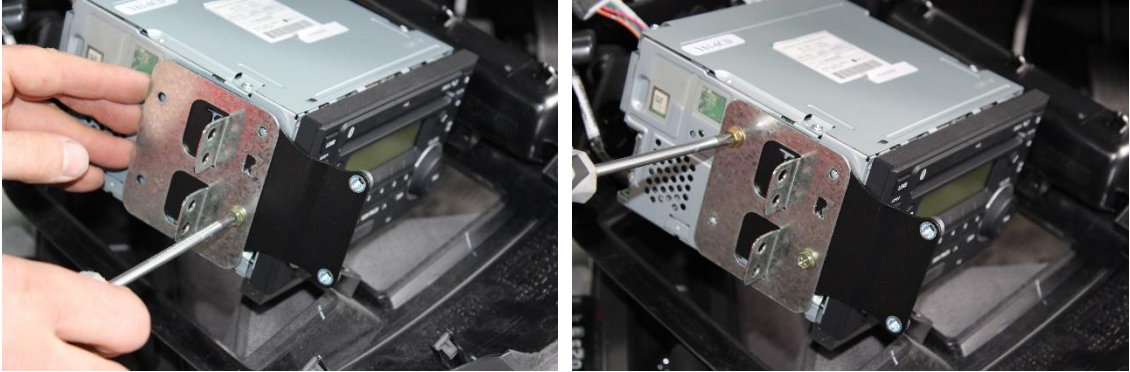
- 4 Move the unit away from the dash. Avoid damaging or removing the cables



- 5 Unscrew 4 screws from the head-unit mounting brackets. Place the In-Dash Mount side brackets between the silver mounting brackets and the head unit then reinsert the screws.

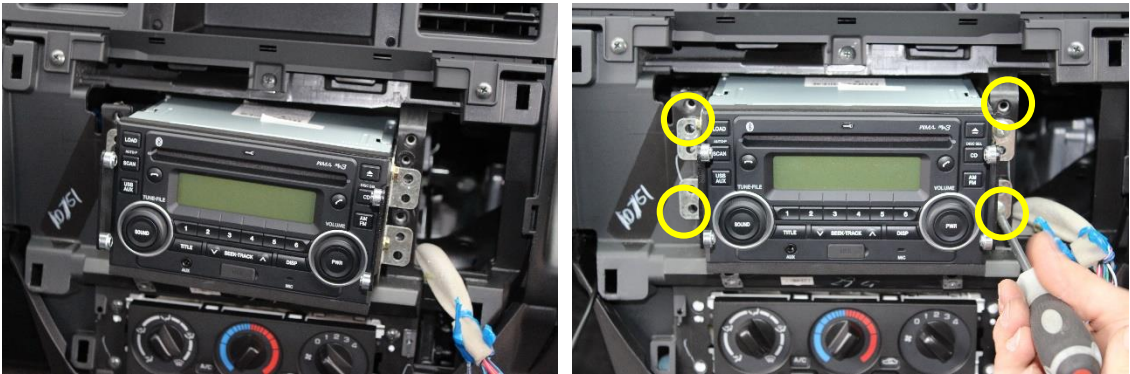


6



7

Re-install the head unit assembly and replace the four screws.



8

Locate the fascia plate and clip back into place.



9

Install the two screws below the fascia



If you have any issues or questions, please contact us.
Industrial Evolution