

Installation Instructions

Subaru Levorg (2016+) InDash Mount



Step	Instructions
------	--------------

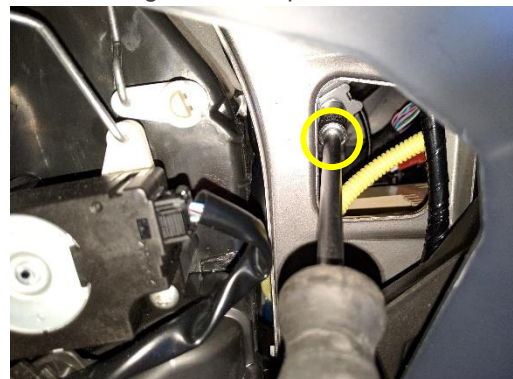
1

Remove passenger side compartment glove box.



2

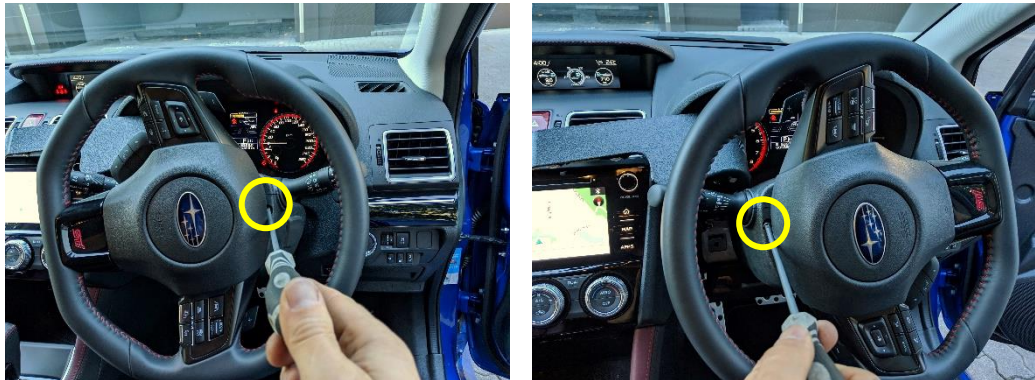
Remove screw from inside compartment on right side, as pictured.



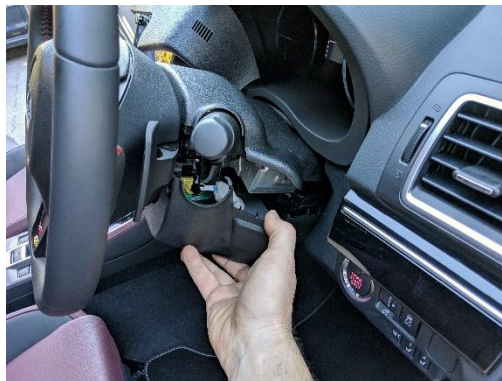
- 3 Remove screw from driver's side, underneath steering wheel on left side, as pictured. Loosen plastic panel above screw.



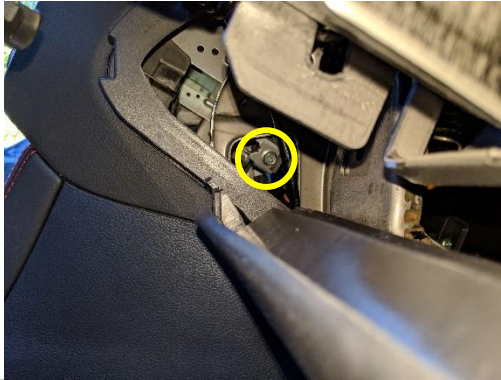
- 4 Start engine to rotate steering wheel, remove one screw on each side.



- 5 Remove plastic cover under steering wheel.



6 Remove screw from left side behind loosened panel in Step 3, as pictured.



7 Carefully pry and remove upper A/C air vents, without unplugging, and remove 2x screws.



8 Remove centre console, without unplugging, and remove 4x existing screws on each side.



9

Use existing screws removed in Step 8 to install left + right brackets.



10

Replace centre console and A/C vents, replacing screws removed in Step 7.



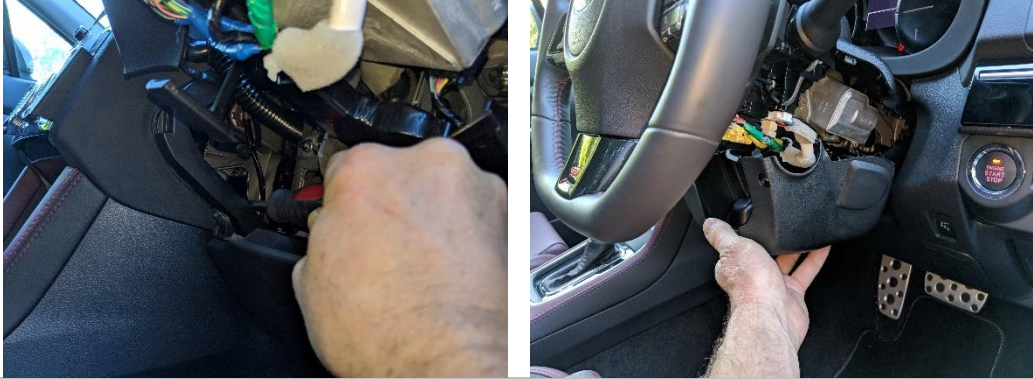
11

Replace screw and passenger side compartment door.



12

Replace screw removed in Step 6 and plastic cover removed in Step 5.



13

Replace 2x screws removed in Step 4 beside steering wheel, and replace screw removed and panel loosened in Step 3.



14

Install front bracket using 4x black screws provided.



Enjoy your new InDash Mount!



If you have any issues or questions, please contact us.
Industrial Evolution