

Installation Instructions

Subaru Liberty & Outback (2021+) In Dash Mount



Step

Instructions

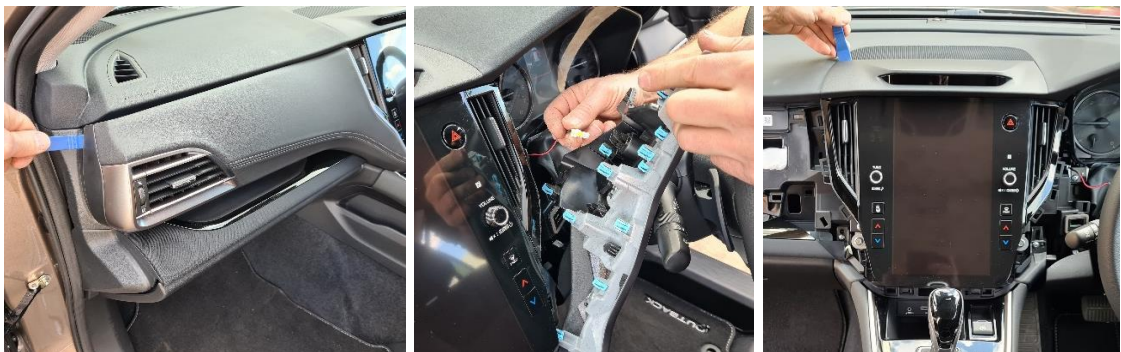
1

Remove 2 x screws and loosen speedometer plastic surround.



2

Remove passenger side dash piece and driver side dash piece as shown. Then, loosen upper dash piece and set aside.



- 3 Remove 4 x fixings. Place a cloth over the gearstick to prevent damage, then rest display unit.



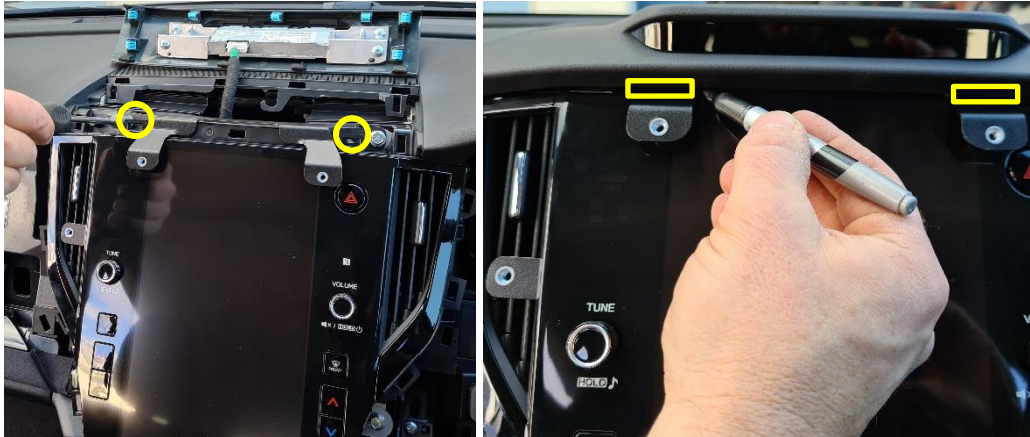
- 4 Install bracket as shown, using the small piece to anchor the larger bracket behind the plastic. Use 2 x provided countersunk screws to fix bracket in place as shown.



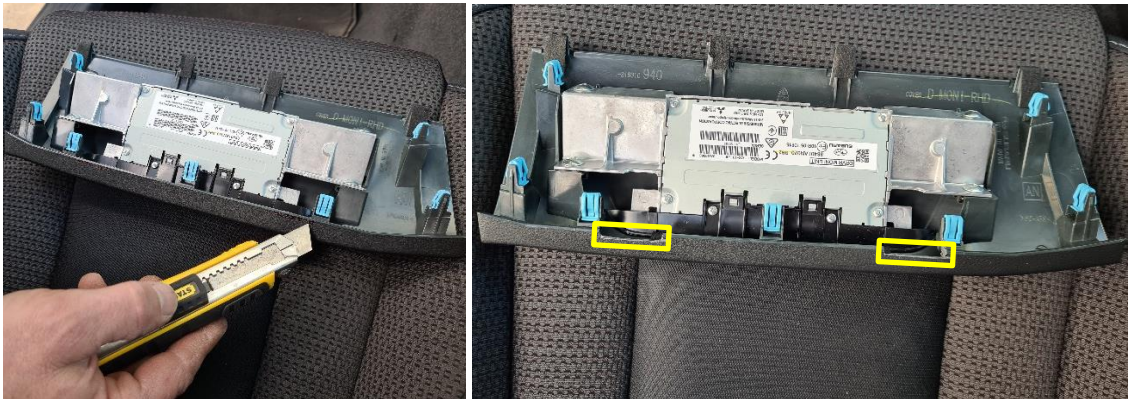
- 5 Return display unit and 4 x screws to the dash.



- 6 Install upper bracket using 2 x screws. Place the upper dash piece in its natural position as shown, then mark the underside area that meets the 2 x bracket tabs.



- 7 Remove the upper dash piece from the dash. Using a sharp blade, carefully trim 2 x locations.



- 8 Return all cables and dash components to their original states.



9

Install front bracket using 3 x countersunk screws provided.



If you have any issues or questions, please contact us.
Industrial Evolution