

## Installation Instructions Toyota Camry 2018+

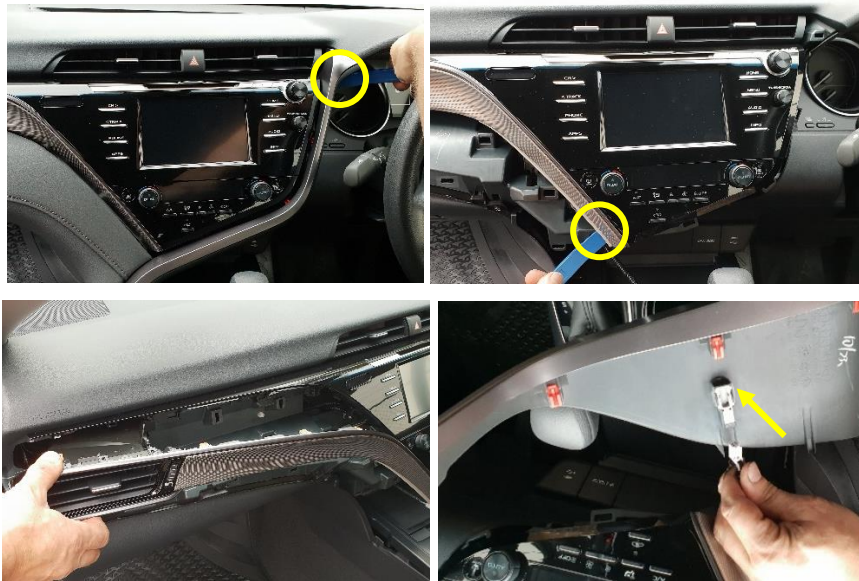


STEP

INSTRUCTION

1

Carefully lever, unplug and remove dash surrounds and padding.



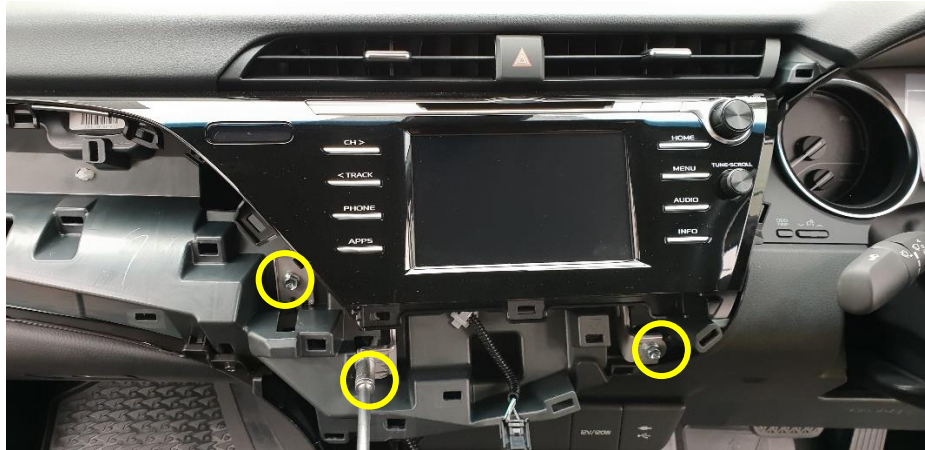
2

Remove and unplug A/C unit.



3

Remove 3 screws.



4

Remove side fascia and screw.



5

Fit lower bracket, as pictured, and replace A/C unit to secure.



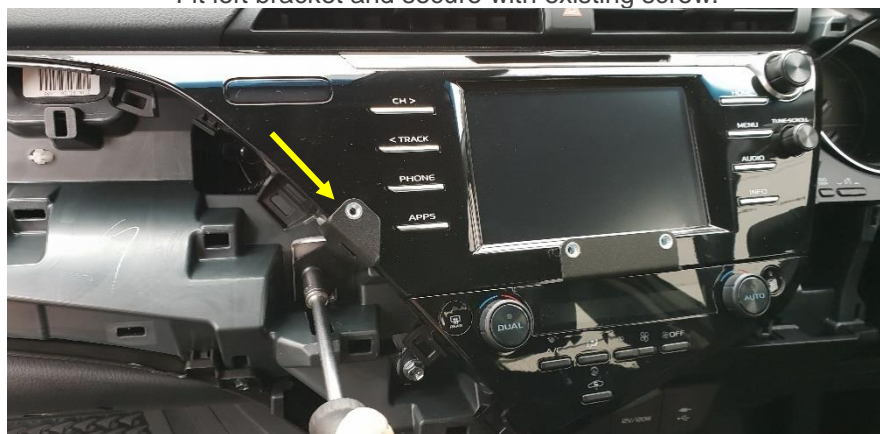
7

Replace 2 lower screws.



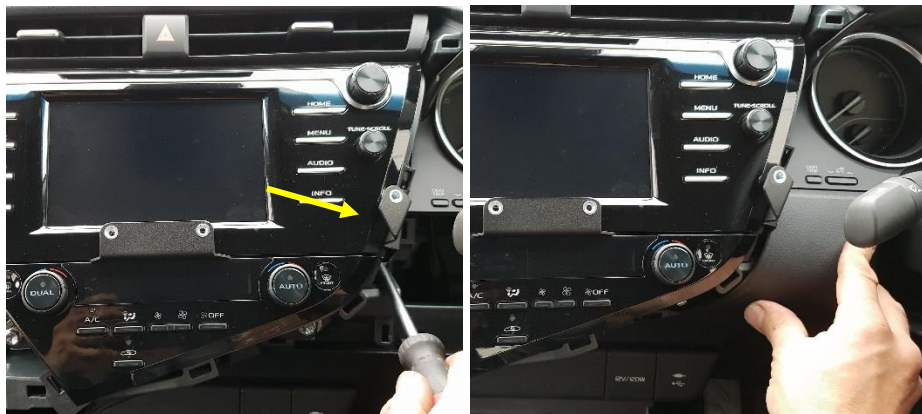
8

Fit left bracket and secure with existing screw.



9

Fit right bracket with existing screw, and replace fascia



10

Replace dash surrounds and padding.



11

Install front bracket with 4 x M5 countersunk screws provided.



12

Enjoy your new Indash mount!



If you have any issues or questions, please contact us.  
**Industrial Evolution**