

Installation Instructions

Toyota Hilux (2016+)



Step

Instructions

1

Remove upper glovebox panel



2

Remove speedometer surround panel



3

Remove upper horizontal trim panel



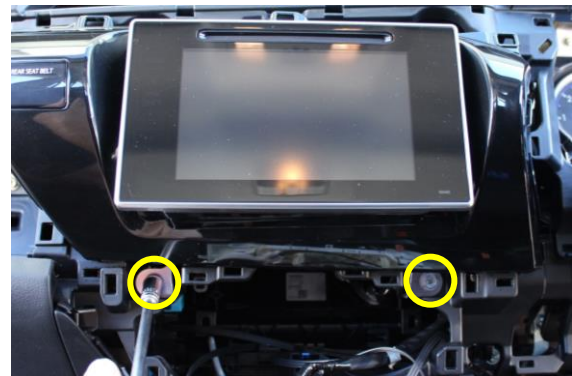
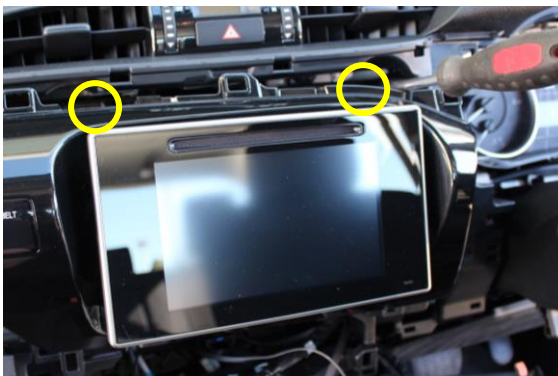
4

Snap out A/C control panel – Do not unplug these wires



5

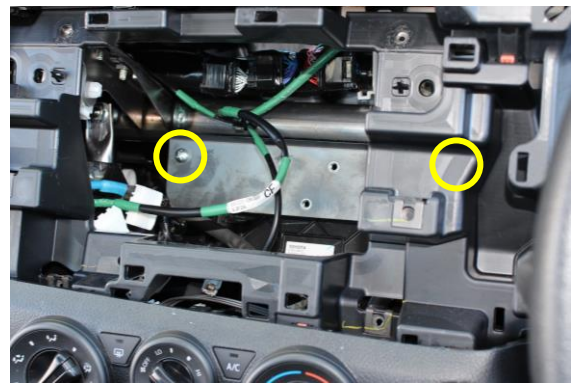
Remove 4 screws on the top & bottom of touchscreen



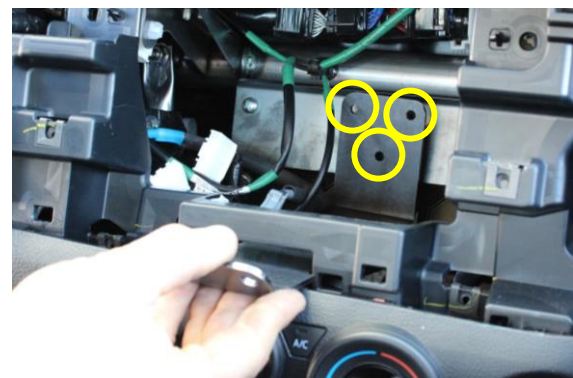
6 Unplug & remove touchscreen with surround



7 Install part 1 with 2x M6 screws provided



8 Install part 2 with 3x M6 screws provided



9

Take touchscreen and surround to a clean work area



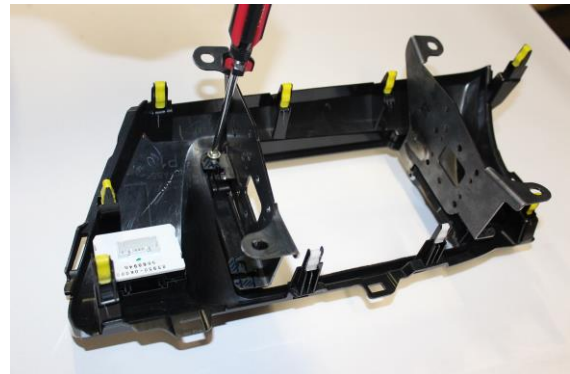
10

Remove all screws holding the touchscreen and side brackets in place



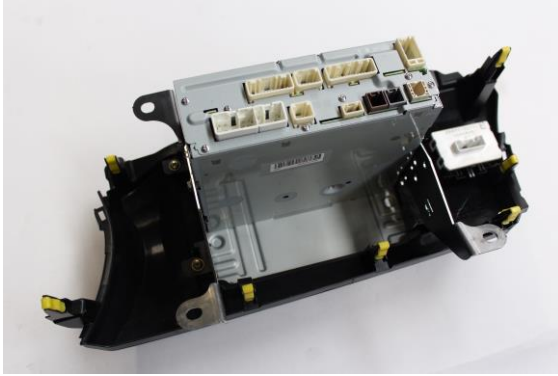
11

Replace side brackets with part 3 (left & right)



12

Screw in touchscreen



13

Plug in and reinstall touchscreen. Push down on part 2 slightly for clearance



14

Reinstall all screws, wires and dashboard panels from steps 1 - 6

15

Install dash bracket with 4x countersunk M5 screws provided



16

Enjoy your new InDash Mount!



If you have any issues or questions, please contact us.
Industrial Evolution